



EC Type Examination Certificate Number: UK/ 0120/ SGS0044

Janz-Contadores de Energia,SA

Av. Infante D. Henrique 328
1800-223 Lisboa
Portugal

Instrument Identification:
B1801*****

Poly Phase, Credit, Active Import/ Export, Multi-rate, Indoor, Electricity Meter

Instrument Traceable Number
UK/ 0120/ SGS0044

has been assessed and certified as meeting the requirements of

EC Directive 2004/22/EC on Measuring Instruments Annex B

It is certified that the manufacturer's technical design and specimen for the above instrument has been examined and, based on the evidence submitted, it is considered that the instrument conforms to the requirements of MI-003 of EC Directive 2004/22/EC.

This certificate is issued in conjunction with a certificate covering the product verification as required in Annex D or Annex F.

This certificate is valid for 10 years from: 11th March 2010 until 10th March 2020

Issue 2

Certification is based on report number(s)
EMA124573 & EMA140749

Notified Body Number 0120

Authorised Signature
Mr J Weaver

CE 0120

Notified Body
SGS United Kingdom Ltd, 202B Worle Parkway, Weston-super-Mare, BS22 6WA UK
t +44 (0)1934 522917 f +44 (0)1934 522137 www.sgs.com

Contact Address
SGS United Kingdom Ltd, Unit 10, South Industrial Estate, Bowburn, Durham, DH6 5AD UK
t +44 (0)191 377 2000 f +44 (0)191 377 2020 www.sgs.com

EC Type Examination Cert.

Page 1 of 5
MID-B06E Rev 3

This document is issued by the Company under its General Conditions of Service printed overleaf. Attention is drawn to the limitation of liability, indemnification and jurisdiction issues defined therein.

Any holder of this document is advised that information contained hereon reflects the Company's findings at the time of its intervention only and within the limits of Client's instructions, if any. The Company's sole responsibility is to its Client and this document does not exonerate parties to a transaction from exercising all their rights and obligations under the transaction documents. Any unauthorized alteration, forgery or falsification of the content or appearance of this document is unlawful and offenders may be prosecuted to the fullest extent of the law.

SGSPAPER
10063498

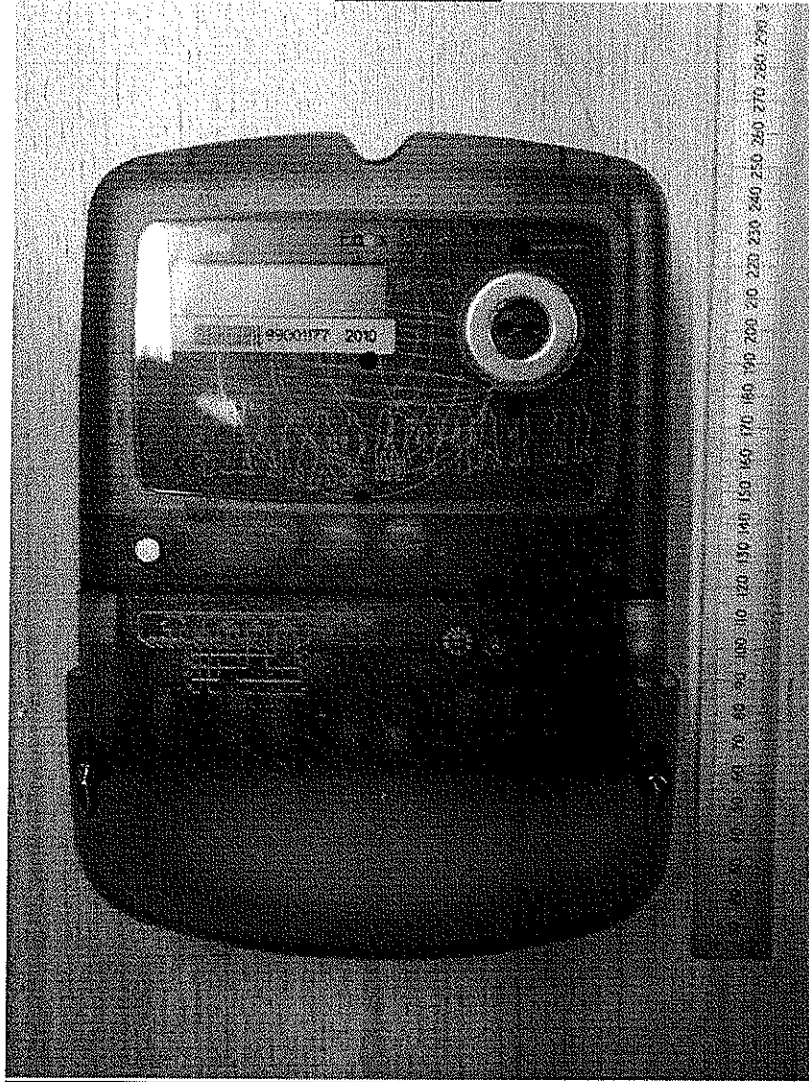


Graphic design: vector register, printed by oriel, laser security printing, no Switzerland

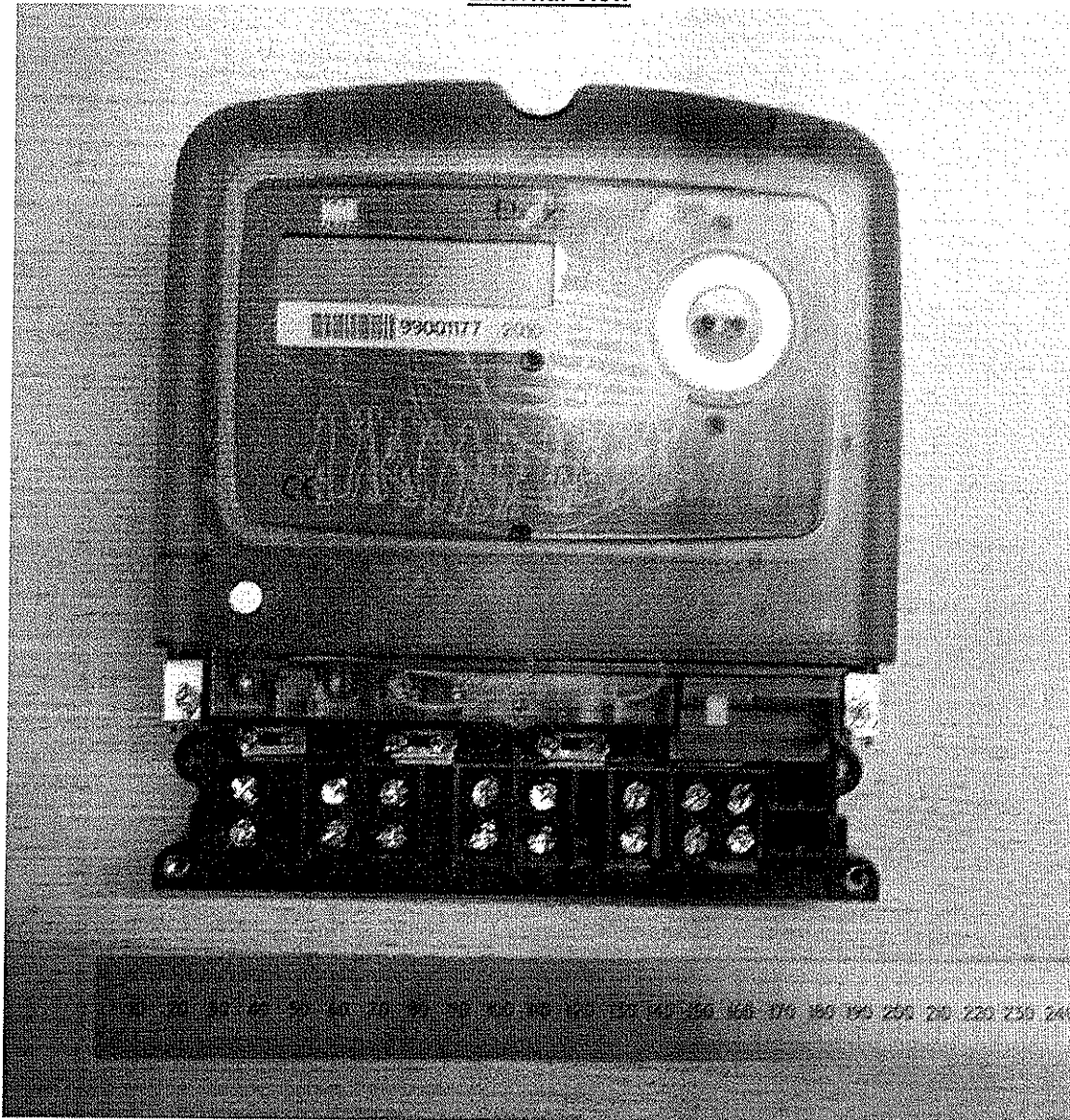
Approval Annex for EC Type Examination Cert. No. UK/ 0120/ SGS0044

Manufacturer	:	Janz-Contadores de Energia, SA.	
Type of Meter(s)	:	B1801*****	
Description of Meter	:	Poly Phase, Credit, Active Import/ Export, Multi-rate, Indoor, Electricity Meter	
Accuracy Class (es)	:	A or B (kWh)	Software Version No : 1.6.1 Location : LCD
Firmware Version No	:	1.2	Bill Of Materials No : 917809501f2b 917809501f3b 917809501f5c
Location	:	LCD	
Meter Location	:	Indoor	Sealing Type : 2 x Wire & Crimp or 2 x Tamper Proof Sealing Tape
Integrity of Meter	:	Inaccessible without breaking seals	Temperature Range : -25°C to +55°C
Type of Circuit	:	3p4w	Frequency : 50Hz
Current Ranges (A)	:	0,5-10(80)A 0,5-10(100)A	Voltage Range (V) : 3 x 230/ 400V

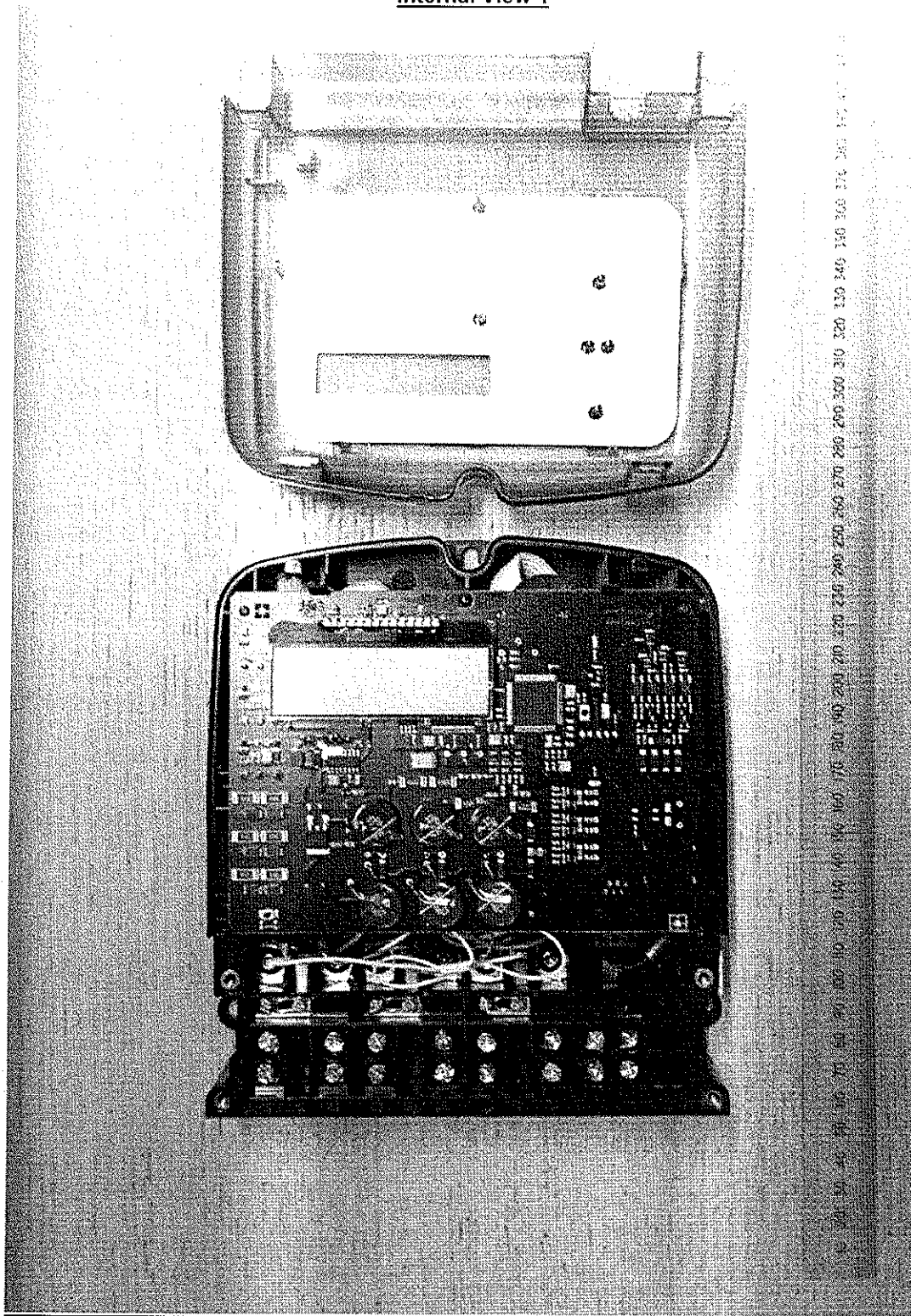
External View



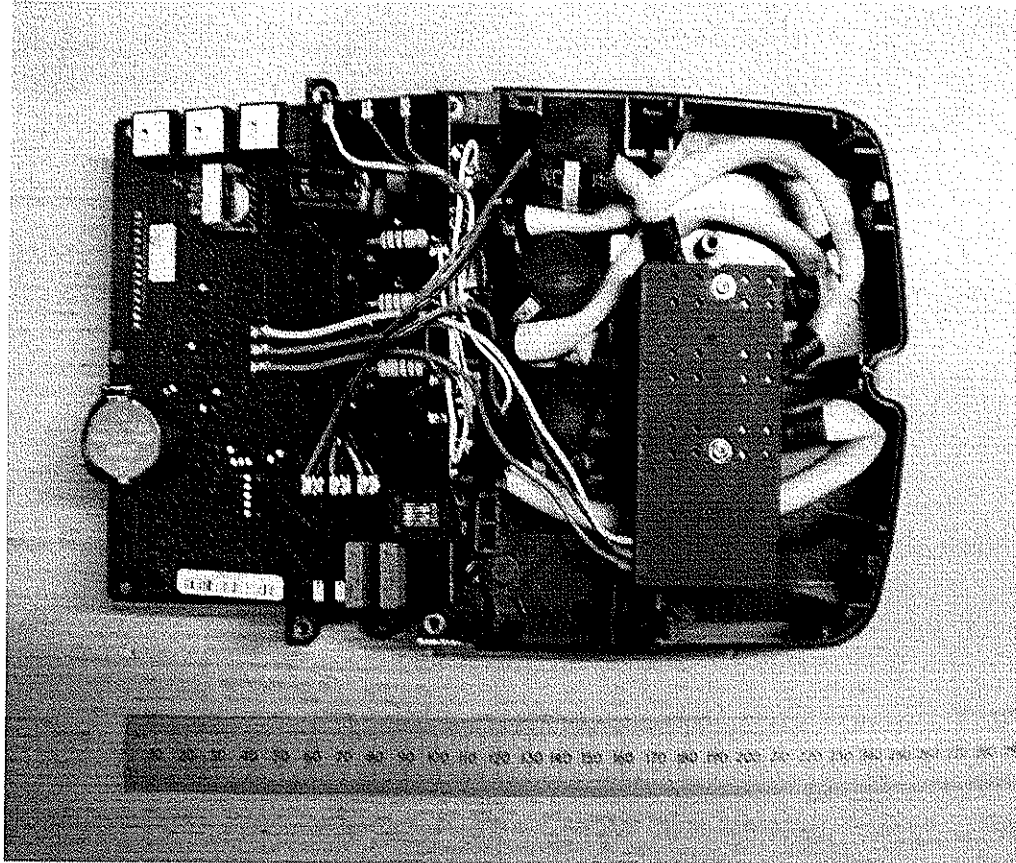
External View



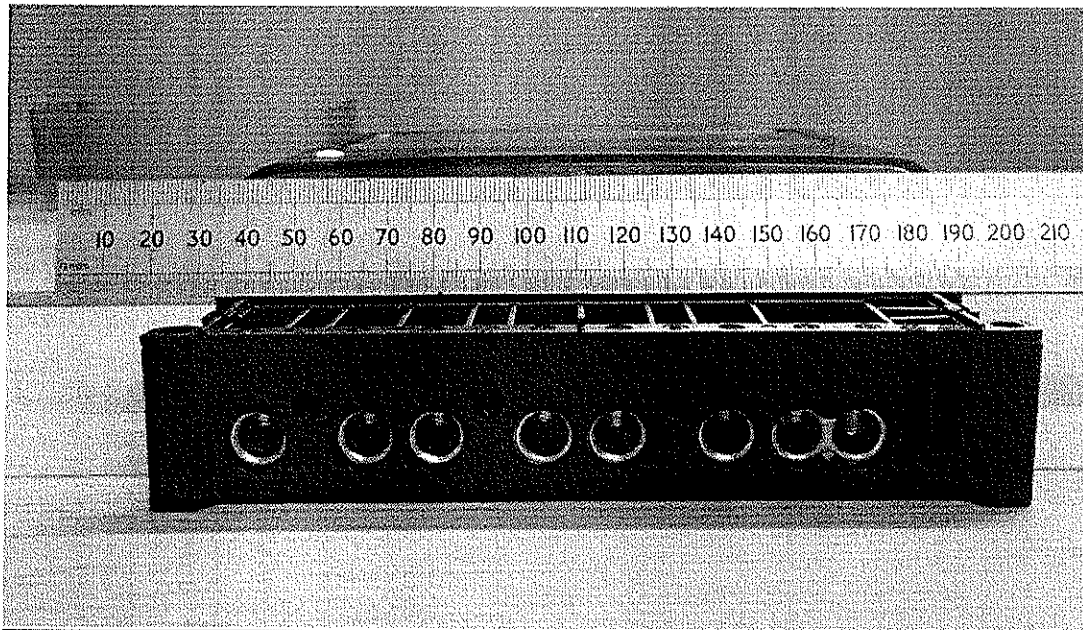
Internal View 1



Internal View 2



Terminal View



Product Variant Identification Details:

Type Designation		Description of meter
CONNECTION MODE	B	Poly phase meter for direct connection (4 wires)
SERIES	1	The concept of series is related with the physical aspect of meter (meter case), seven series remain available
TARIFF	80	Programmable Multirate, kWh/kvarh import export (demand registration and load profile)
INTERFACE TO THE USER	-	Without push buttons (LCD scrolls the programmed data)
	1	One push button to access data on LCD
PULSE OUTPUT	-	No pulse output
	E1	One pulse output (through terminals 21/22)
	E2	Two pulse outputs (through terminals 21/24 & 22/24)
PULSE INPUT	-	No pulse input for tariff switch
	I1	One pulse input for tariff switch
	I2	Two pulse inputs for tariff switch (excludes E2)
AUXILIARY COMMUNICATIONS	-	No auxiliary communications
	R2	With RS232 port / multidrop / HAN ports
	R4	With RS485 port
AUXILIARY DEVICES	-	No auxiliary devices
	LR	Latching relay
ANTI-TAMPER	-	Without external cover opening detection device
	F	With external cover opening detection device

Modifications to the meter(s) described according to approval No. **UK/ 0120/ SGS0044** must be notified to the issuing body to confirm the meter(s) continuing compliance to the relevant pattern approval standard(s).